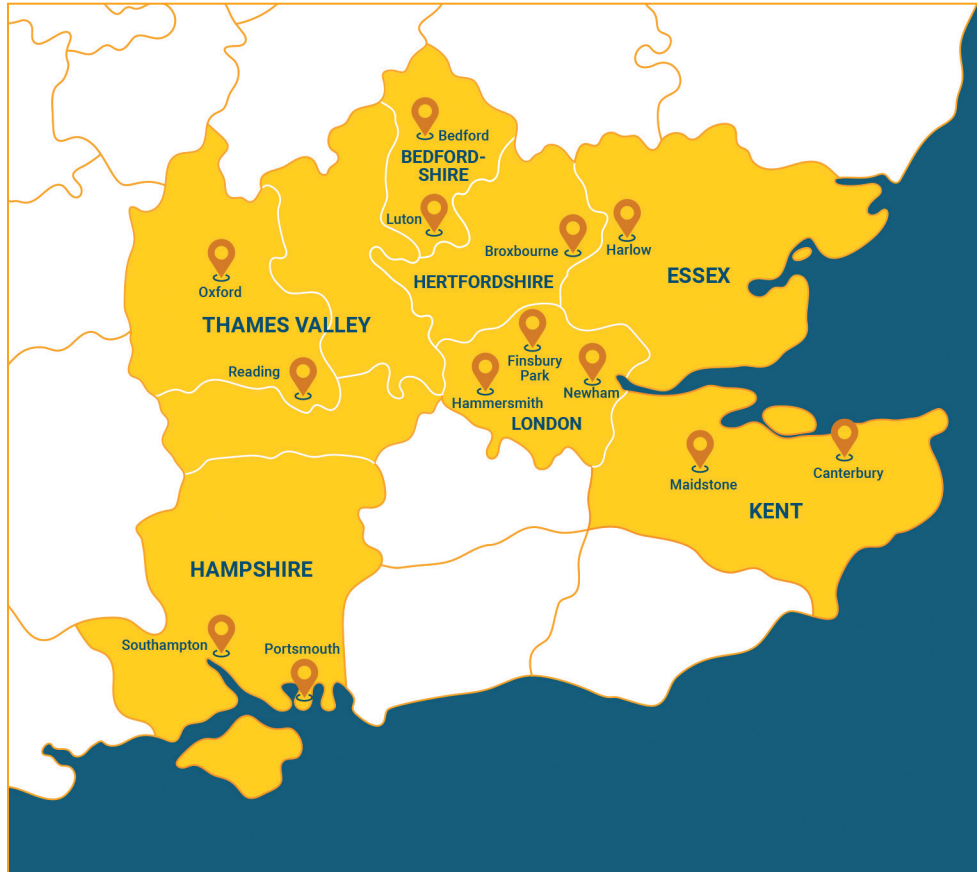


## Advance's Minerva Service in South East England



 Minerva Women's Centres



Advance Registered Charity No. 1086873 | A Company Limited by Guarantee  
Registered offices in England: Advance Charity, PO Box 74643, London, W6 6JU | Reg. No. 04064660



**advance**  
SAVING LIVES  
CHANGING LIVES

## Advance's Minerva Community services in Thames Valley

For more information about our services please call:

**020 8563 2225**

Minerva Thames Valley Service:  
minerva\_thamesvalley@advancecharity.org.uk  
[www.advancecharity.org.uk](http://www.advancecharity.org.uk)

Advance's Minerva Service in Thames Valley helps women involved in the Criminal Justice System to move on with their lives.

Our goal is to reduce re-offending amongst women by providing dedicated support services tailored to women's needs.

Our specialist Advocates work closely with probation, housing, health, children's services and other professionals to get women all the help and advice they need, when they need it, from one place.



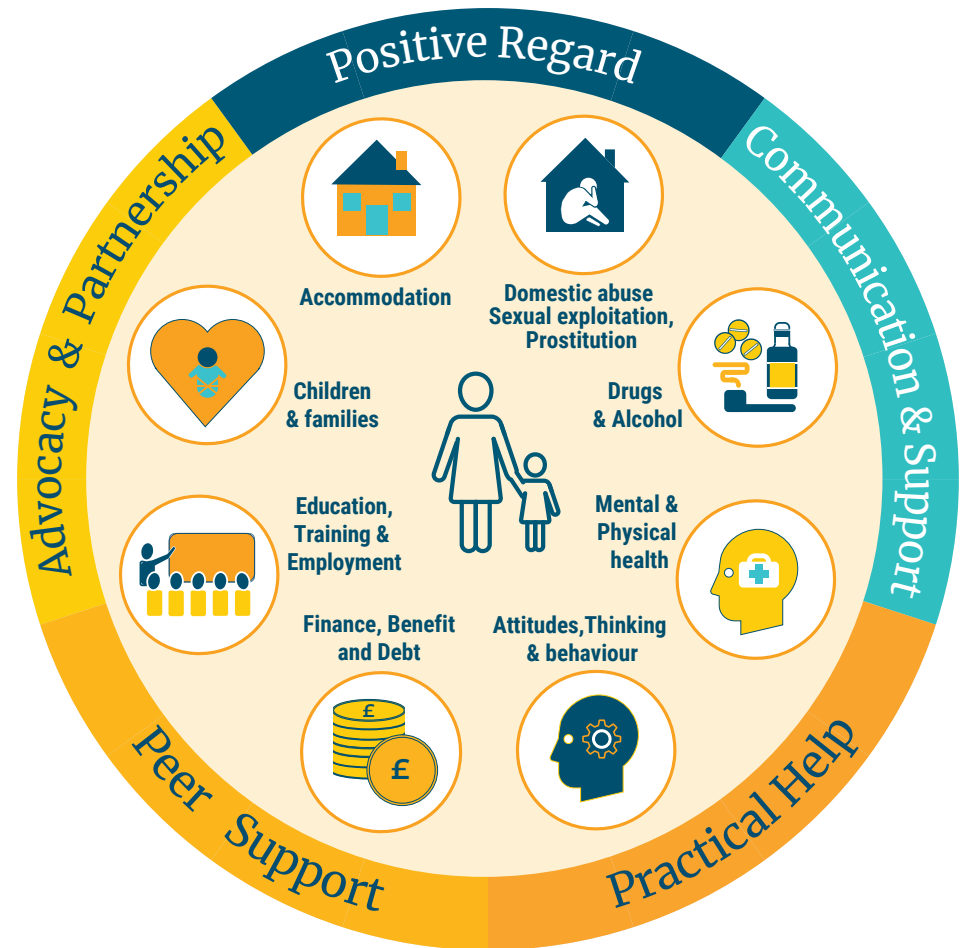
# I FEEL LIKE A WOMAN AT MINERVA, NOT AN OFFENDER

**Advance Minerva offers specialised support to women in the criminal justice system across Thames Valley:**

- Targeted support and advocacy for women to address practical and emotional needs, including outreach services
- Intensive one-to-one support across all women's rehabilitative needs
- Safe, women-only local hubs pan-regional and Women's centres
- Access to tailored groups and workshops delivered by specialist providers
- Prison in-reach and Through-the-Gate Support for women in custody within three months prior to their release.

Referrals can be made by Probation Practitioners via **Refer & Monitor** only.

Enquiries from all other professionals can be sent to:  
**[minerva\\_thamesvalley@advancecharity.org.uk](mailto:minerva_thamesvalley@advancecharity.org.uk)**



**1000s**  
of women  
supported

We provide holistic  
support around  
each woman's  
personal needs

**82%**  
of women reported  
improved health  
and well-being

## Advance's Minerva Service in South East England



 Minerva Women's Centres



**one small thing**



Advance Registered Charity No. 1086873 | A Company Limited by Guarantee  
Registered offices in England: Advance Charity, PO Box 74643, London, W6 6JU | Reg. No. 04064660



**advance**  
SAVING LIVES  
CHANGING LIVES

## Advance's Minerva Community services in Hampshire

For more information about our services please call:

**02393 878992**

Minerva Hampshire Service:  
minerva\_hampshire@advancecharity.org.uk  
[www.advancecharity.org.uk](http://www.advancecharity.org.uk)

Advance's Minerva Service in Hampshire helps women involved in the Criminal Justice System to move on with their lives.

Our goal is to reduce re-offending amongst women by providing dedicated support services tailored to women's needs.

Our specialist Advocates work closely with probation, housing, health, children's services and other professionals to get women all the help and advice they need, when they need it, from one place.



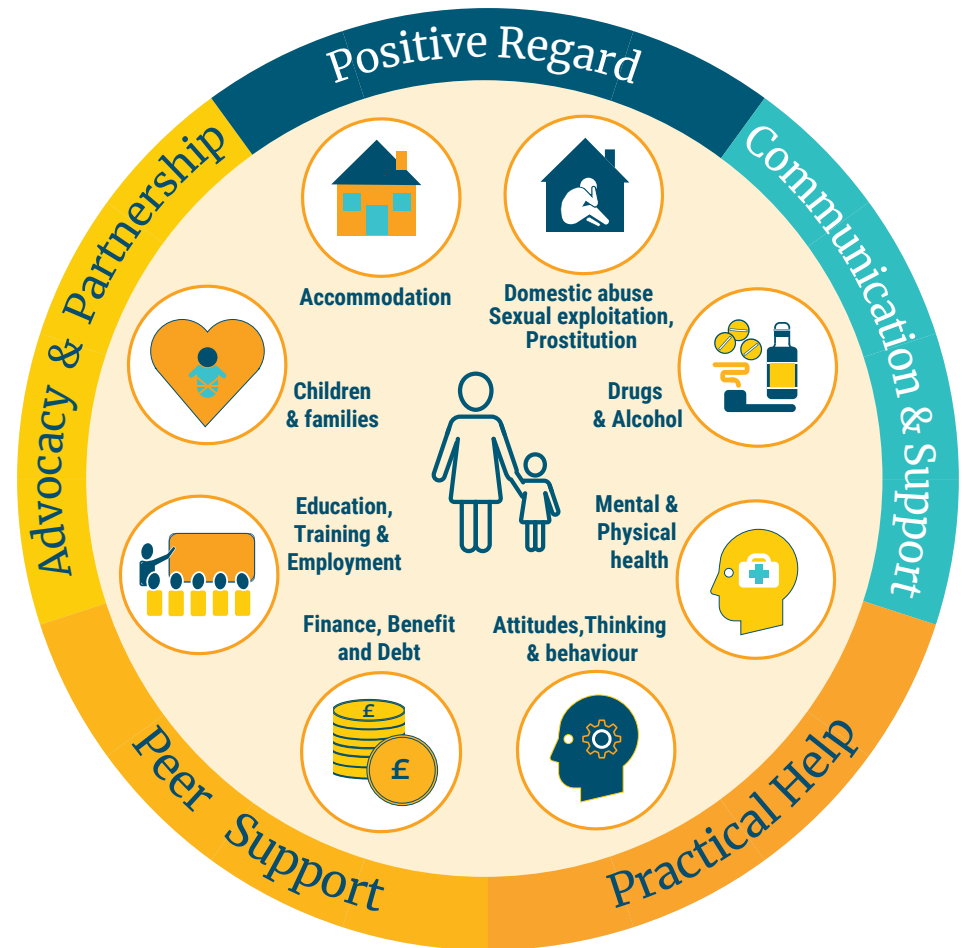
# I FEEL LIKE A WOMAN AT MINERVA, NOT AN OFFENDER

## Advance Minerva offers specialised support to women in the criminal justice system across Hampshire:

- Targeted support and advocacy for women to address practical and emotional needs, including outreach services
- Intensive one-to-one support across all women's rehabilitative needs
- Safe, women-only local hubs pan-regional and Women's centres
- Access to tailored groups and workshops delivered by specialist providers
- Prison in-reach and Through-the-Gate Support for women in custody within three months prior to their release.

Referrals can be made by Probation Practitioners via **Refer & Monitor** only.

Enquiries from all other professionals can be sent to:  
[minerva\\_hampshire@advancecharity.org.uk](mailto:minerva_hampshire@advancecharity.org.uk)



**1000s**  
of women  
supported

We provide holistic  
support around  
each woman's  
personal needs

**82%**  
of women reported  
improved health  
and well-being



## Advance's Minerva Service in South East England



 Minerva Women's Centres



Advance Registered Charity No. 1086873 | A Company Limited by Guarantee  
Registered offices in England: Advance Charity, PO Box 74643, London, W6 6JU | Reg. No. 04064660



**advance**  
SAVING LIVES  
CHANGING LIVES

## Advance's Minerva Community services in Hertfordshire

For more information about our services please call:

**020 8563 2225**

Minerva Hertfordshire Service:  
minerva\_essexherts@advancecharity.org.uk  
[www.advancecharity.org.uk](http://www.advancecharity.org.uk)

Advance's Minerva Service in Hertfordshire helps women involved in the Criminal Justice System to move on with their lives.

Our goal is to reduce re-offending amongst women by providing dedicated support services tailored to women's needs.

Our specialist Advocates work closely with probation, housing, health, children's services and other professionals to get women all the help and advice they need, when they need it, from one place.



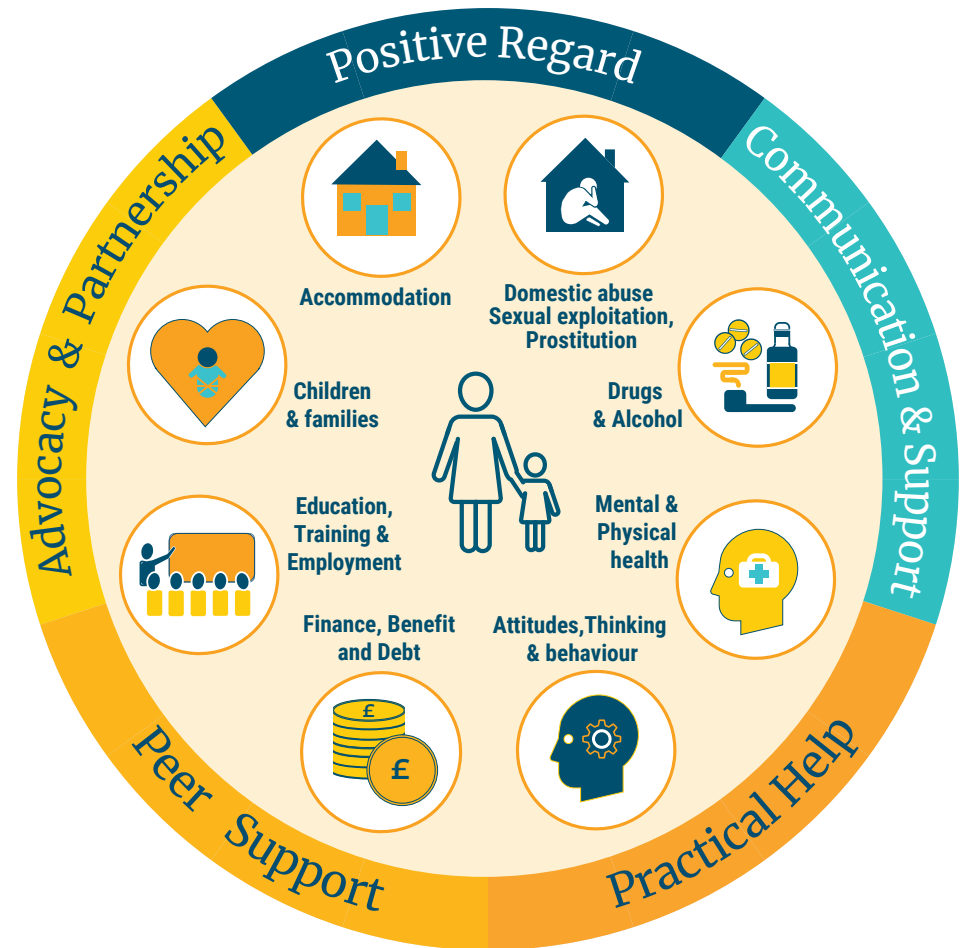
# I FEEL LIKE A WOMAN AT MINERVA, NOT AN OFFENDER

**Advance Minerva offers specialised support to women in the criminal justice system across Hertfordshire:**

- Targeted support and advocacy for women to address practical and emotional needs, including outreach services
- Intensive one-to-one support across all women's rehabilitative needs
- Safe, women-only local hubs pan-regional and Women's centres
- Access to tailored groups and workshops delivered by specialist providers
- Prison in-reach and Through-the-Gate Support for women in custody within three months prior to their release.

Referrals can be made by Probation Practitioners via **Refer & Monitor** only.

Enquiries from all other professionals can be sent to:  
**[minerva\\_essexherts@advancecharity.org.uk](mailto:minerva_essexherts@advancecharity.org.uk)**

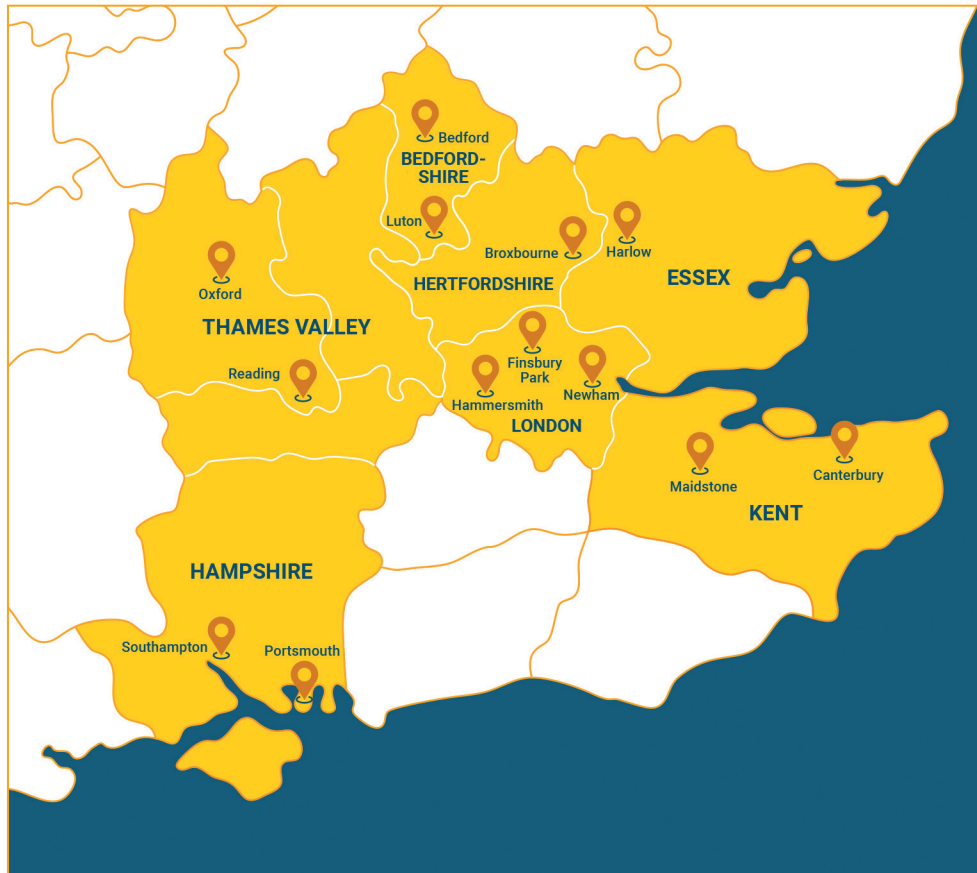


**1000s**  
of women  
supported

We provide holistic  
support around  
each woman's  
personal needs

**82%**  
of women reported  
improved health  
and well-being

## Advance's Minerva Service in South East England



 Minerva Women's Centres



Advance Registered Charity No. 1086873 | A Company Limited by Guarantee  
Registered offices in England: Advance Charity, PO Box 74643, London, W6 6JU | Reg. No. 04064660



# advance

SAVING LIVES  
CHANGING LIVES

## Advance's Minerva Community services in Essex

For more information about our services please call:

**020 8563 2225**

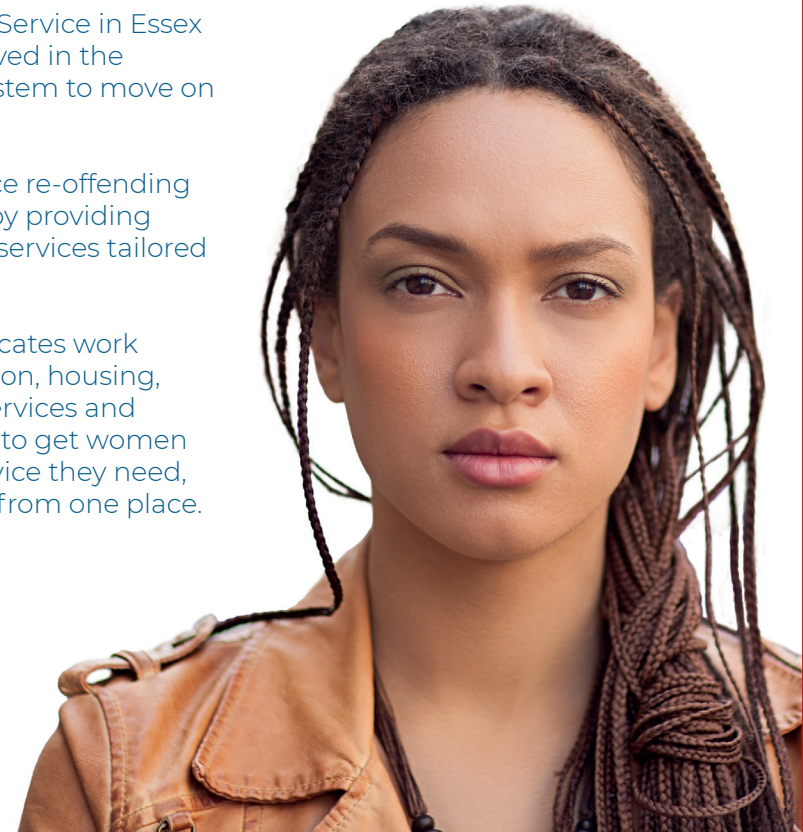
Minerva Essex Service:  
minerva\_essexherts@advancecharity.org.uk

[www.advancecharity.org.uk](http://www.advancecharity.org.uk)

Advance's Minerva Service in Essex helps women involved in the Criminal Justice System to move on with their lives.

Our goal is to reduce re-offending amongst women by providing dedicated support services tailored to women's needs.

Our specialist Advocates work closely with probation, housing, health, children's services and other professionals to get women all the help and advice they need, when they need it, from one place.



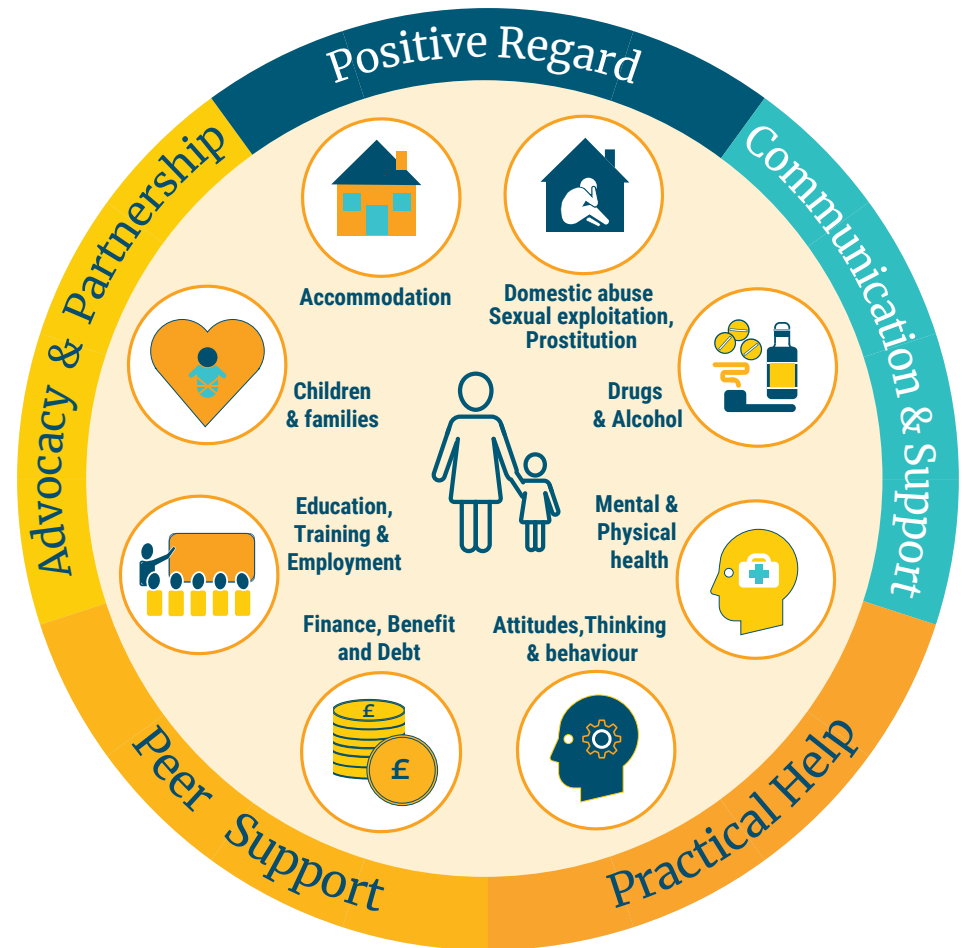
# I FEEL LIKE A WOMAN AT MINERVA, NOT AN OFFENDER

## Advance Minerva offers specialised support to women in the criminal justice system across Essex:

- Targeted support and advocacy for women to address practical and emotional needs, including outreach services
- Intensive one-to-one support across all women's rehabilitative needs
- Safe, women-only local hubs pan-regional and Women's centres
- Access to tailored groups and workshops delivered by specialist providers
- Prison in-reach and Through-the-Gate Support for women in custody within three months prior to their release.

Referrals can be made by Probation Practitioners via **Refer & Monitor** only.

Enquiries from all other professionals can be sent to:  
[minerva\\_essexherts@advancecharity.org.uk](mailto:minerva_essexherts@advancecharity.org.uk)



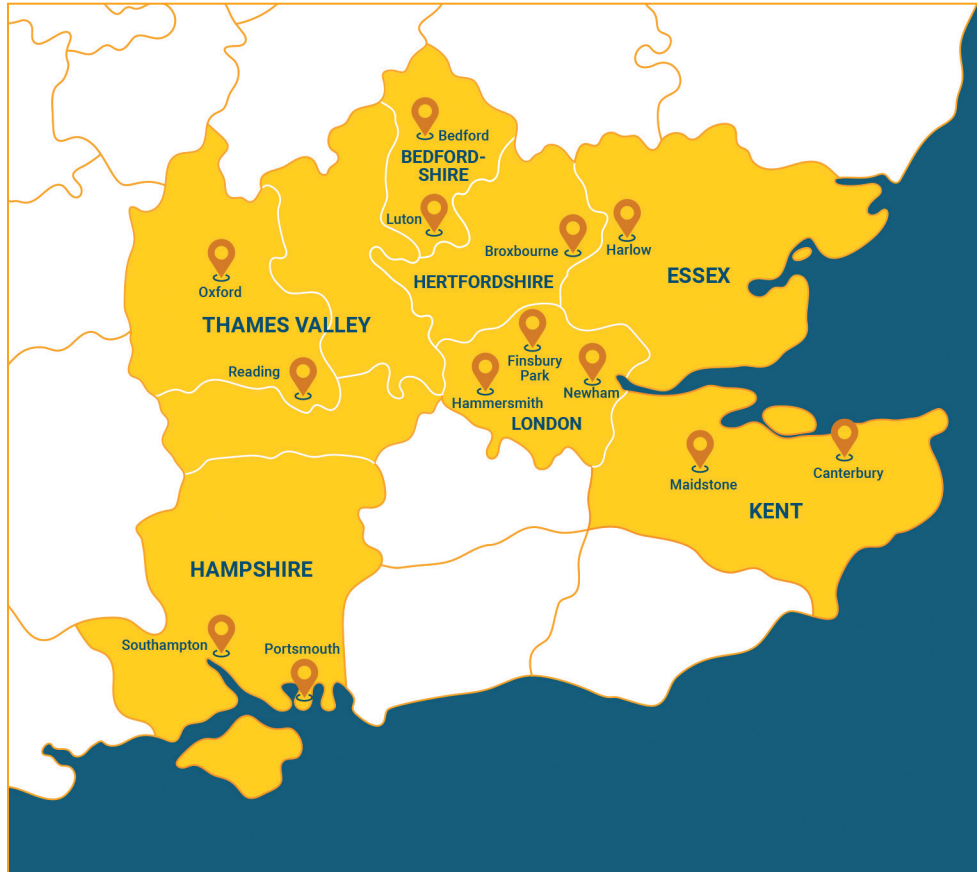
**1000s**  
of women  
supported

We provide holistic  
support around  
each woman's  
personal needs

**82%**  
of women reported  
improved health  
and well-being



## Advance's Minerva Service in South East England



 Minerva Women's Centres



Advance Registered Charity No. 1086873 | A Company Limited by Guarantee  
Registered offices in England: Advance Charity, PO Box 74643, London, W6 6JU | Reg. No. 04064660

## Advance's Minerva Community services in Bedfordshire



For more information about our services please call:

Bedford  
Women's Centre:  
**01234 316801**

Luton Stepping  
Stones centre:  
**01582 457114**

Minerva Bedfordshire Service: [minerva\\_bedfordshire@advancecharity.org.uk](mailto:minerva_bedfordshire@advancecharity.org.uk)  
**[www.advancecharity.org.uk](http://www.advancecharity.org.uk)**

Advance's Minerva Service in Bedfordshire helps women involved in the Criminal Justice System to move on with their lives.

Our goal is to reduce re-offending amongst women by providing dedicated support services tailored to women's needs.

Our specialist Advocates work closely with probation, housing, health, children's services and other professionals to get women all the help and advice they need, when they need it, from one place.



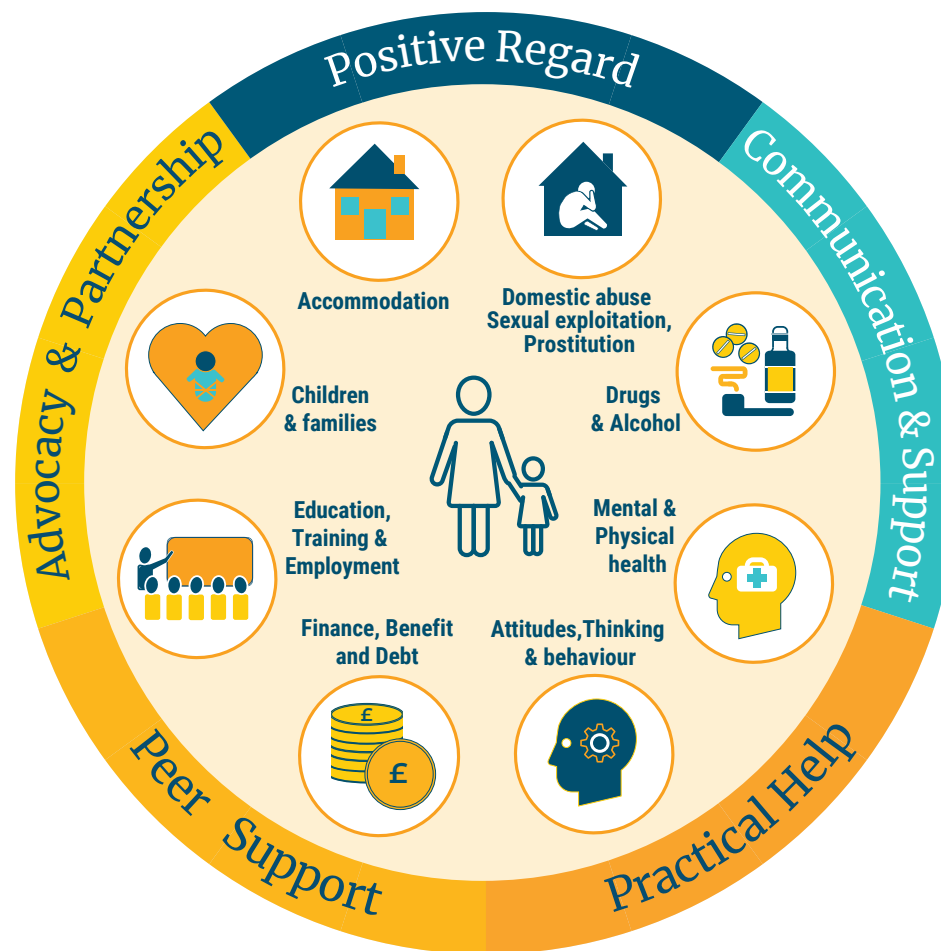
# I FEEL LIKE A WOMAN AT MINERVA, NOT AN OFFENDER

Advance, together with Bedford Women's Centre (Bedford) and Stepping Stones (Luton), offers specialised support to women in the criminal justice system across Bedfordshire:

- Targeted support and advocacy for women to address practical and emotional needs, including outreach services
- Intensive one-to-one support across all women's rehabilitative needs
- Safe, women-only local hubs pan-regional and Women's centres
- Access to tailored groups and workshops delivered by specialist providers
- Prison in-reach and Through-the-Gate Support for women in custody within three months prior to their release

Referrals can be made by Probation Practitioners via **Refer & Monitor** only.

Enquiries from all other professionals can be sent to:  
[minerva\\_bedfordshire@advancecharity.org.uk](mailto:minerva_bedfordshire@advancecharity.org.uk)

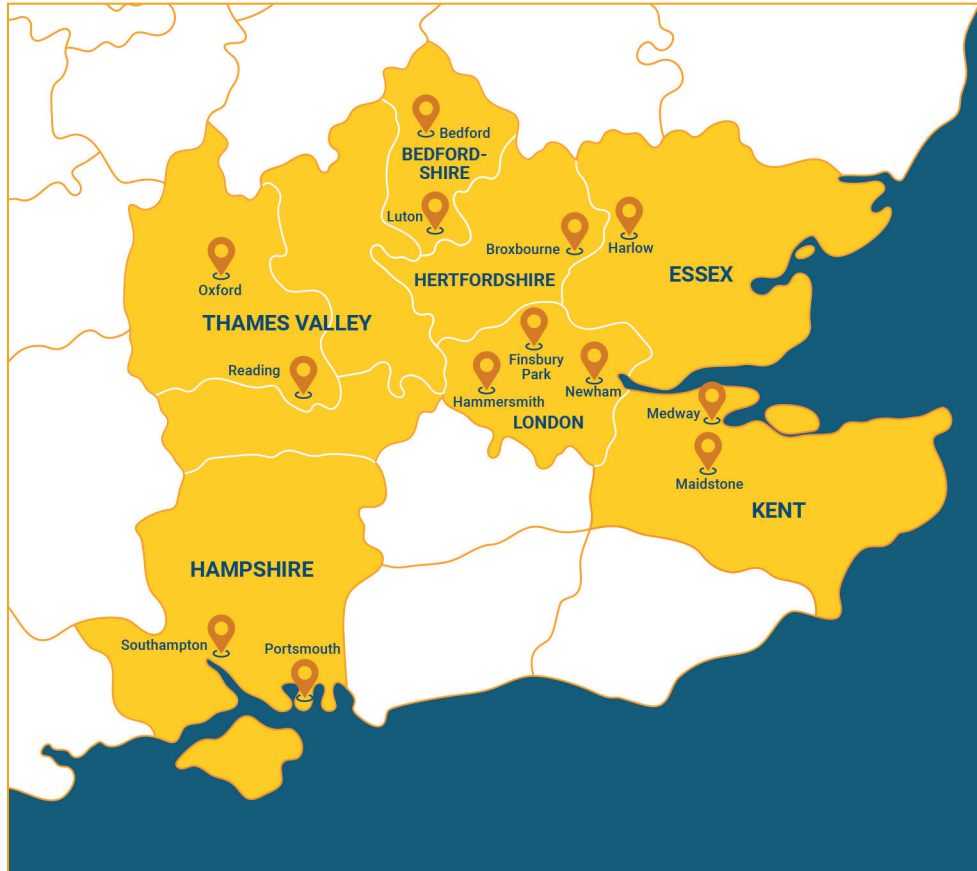


**1000s**  
of women  
supported

We provide holistic  
support around  
each woman's  
personal needs

**82%**  
of women reported  
improved health  
and well-being

## Advance's Minerva Service in South East England



 Minerva Women's Centres



Advance Registered Charity No. 1086873 | A Company Limited by Guarantee  
Registered offices in England: Advance Charity, PO Box 74643, London, W6 6JU | Reg. No. 04064660



**advance**  
SAVING LIVES  
CHANGING LIVES

## Advance's Minerva Community services in Kent

For more information about our services please call:

**0203 096 6481**

Minerva Kent Service:  
minerva\_kent@advancecharity.org.uk

[www.advancecharity.org.uk](http://www.advancecharity.org.uk)

Advance's Minerva Service in Kent helps women involved in the Criminal Justice System to move on with their lives.

Our goal is to reduce re-offending amongst women by providing dedicated support services tailored to women's needs.

Our specialist Advocates work closely with probation, housing, health, children's services and other professionals to get women all the help and advice they need, when they need it, from one place.



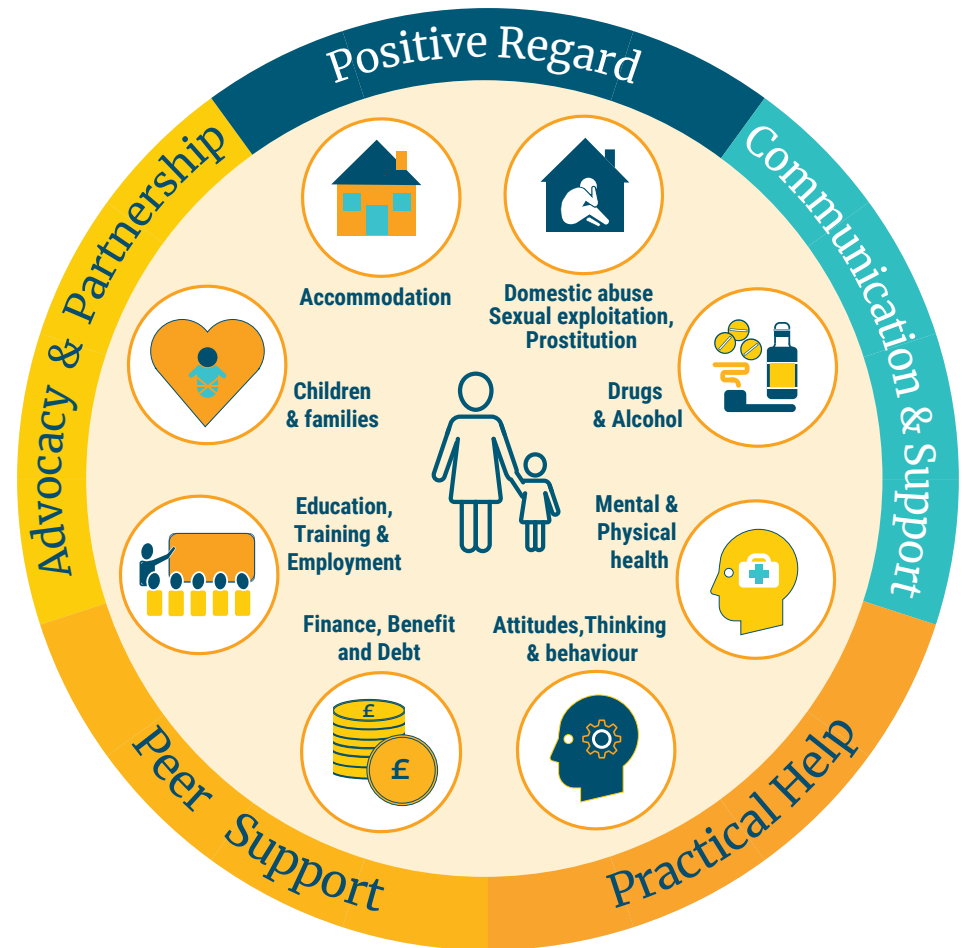
**I FEEL LIKE A WOMAN  
AT MINERVA,  
NOT AN OFFENDER**

## Advance Minerva offers specialised support to women in the criminal justice system across Kent:

- Targeted support and advocacy for women to address practical and emotional needs, including outreach services
- Intensive one-to-one support across all women's rehabilitative needs
- Safe, women-only local hubs pan-regional and Women's centres
- Access to tailored groups and workshops delivered by specialist providers
- Prison in-reach and Through-the-Gate Support for women in custody within three months prior to their release.

Referrals can be made by Probation Practitioners via **Refer & Monitor** only.

Enquiries from all other professionals can be sent to:  
[minerva\\_kent@advancecharity.org.uk](mailto:minerva_kent@advancecharity.org.uk)



**1000s**  
of women  
supported

We provide holistic  
support around  
each woman's  
personal needs

**82%**  
of women reported  
improved health  
and well-being