

Advance's Minerva WrapAround Service in London



 Advance Centres at Hammersmith, Finsbury Park and Stratford



MOPAC

MAJOR OF LONDON
OFFICE FOR POLICING AND CRIME



Advance are co-commissioned by MoJ, MOPAC and the NHS

Advance Registered Charity No. 1086873 | A Company Limited by Guarantee
Registered offices in England: Advance Charity, PO Box 74643, London, W6 6JU | Reg. No. 04064660



Advance's Minerva WrapAround Women's Services in London

For more information about our services please call:

London East: **020 3096 6488**

London West: **020 8563 2225**

London North: **020 3981 8486**

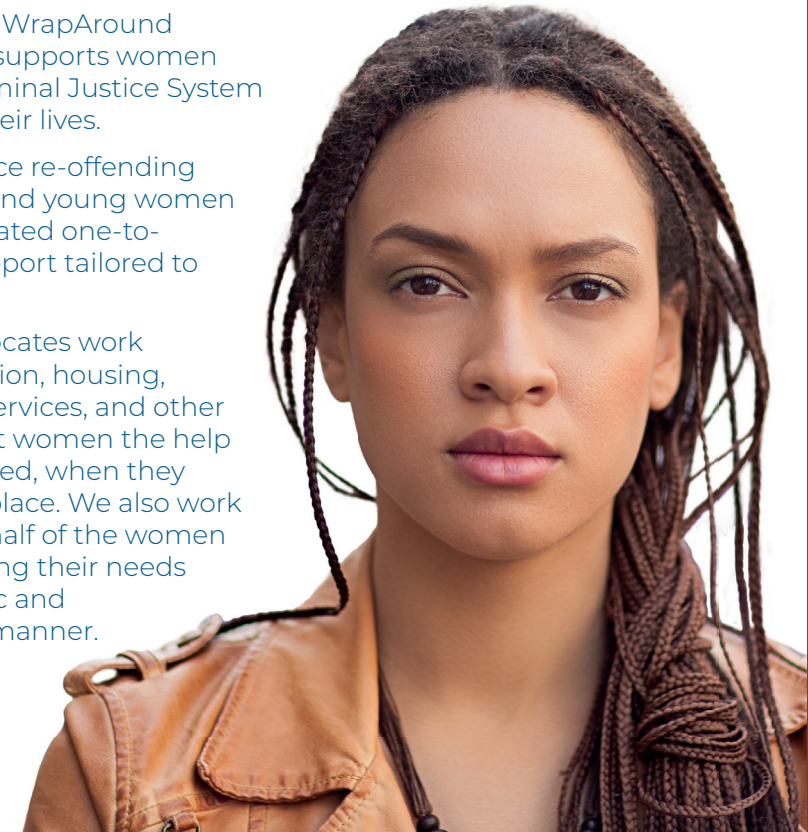
Minerva WrapAround: minervaWA@advancecharity.org.uk

www.advancecharity.org.uk

Advance's Minerva WrapAround Service in London supports women involved in the Criminal Justice System to move on with their lives.

Our goal is to reduce re-offending amongst women and young women by providing dedicated one-to-one and group support tailored to women's needs.

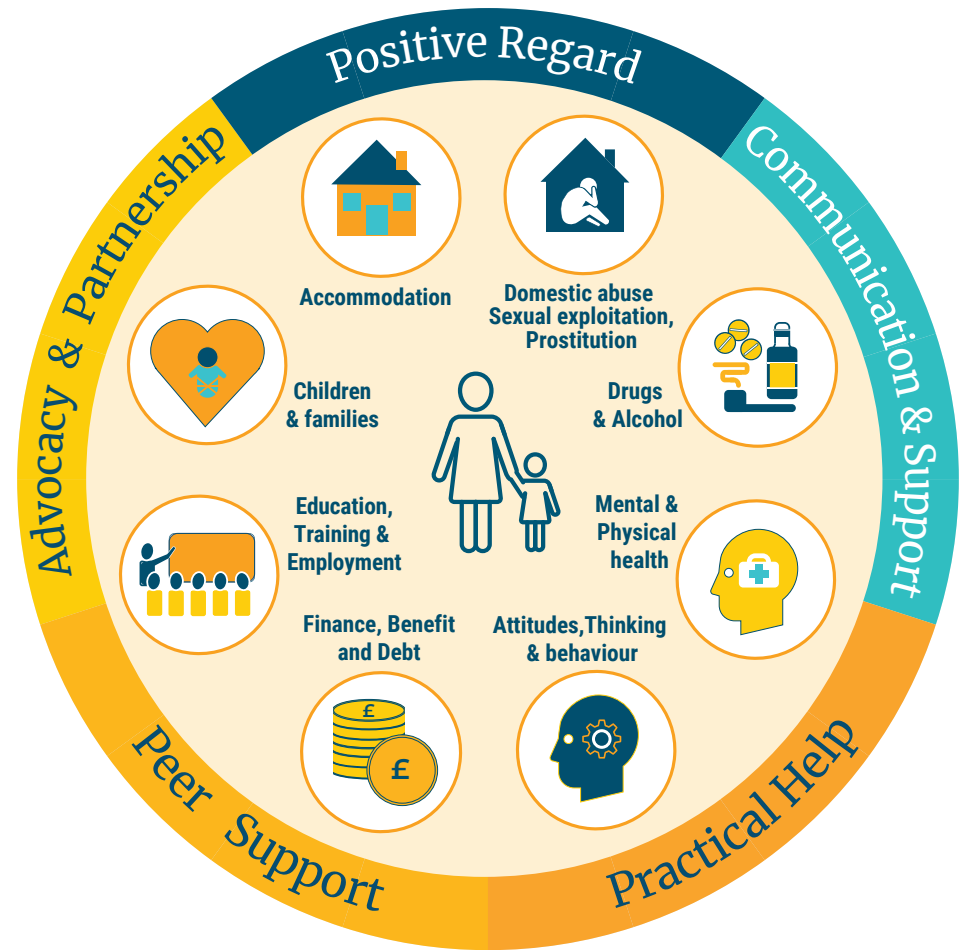
Our specialist Advocates work closely with probation, housing, health, children's services, and other professionals to get women the help and advice they need, when they need it, from one place. We also work to advocate on behalf of the women we support, ensuring their needs are met in a holistic and trauma-informed manner.



I FEEL LIKE A WOMAN AT MINERVA, NOT AN OFFENDER

Advance's Minerva WrapAround Service offers:

- Targeted support and advocacy for women to address practical needs for up to 12 months, including outreach services and signposting
- Intensive one-to-one support across all women's rehabilitative needs
- Safe, women-only local hubs across London and Women's centres in North (Finsbury Park), East (Stratford) & West (Hammersmith) London
- Access to tailored groups and workshops delivered by specialist providers across the 9 pathways of offending e.g. finance and benefits, emotional wellbeing
- Dedicated young women's services for 15–25-year-olds
- Peer mentoring services
- Prison in-reach and Through-the-Gate Support for women in custody (in HMP Bronzefield, Peterborough, Downview and Send) within three months prior to their release.



Referrals can be made by Offender Managers via **Refer & Monitor**

Referrals from all other professionals supporting women with contact with the Criminal Justice System and a need in Domestic Abuse, Mental Health or Substance Misuse can be sent to:

MinervaWA@advance.cjsm.net

Women can also self-refer by calling 020 3953 3111



1000s
of women supported

We provide holistic support around each woman's personal needs

93%
of women reported improved health and well-being