

A map of the South East of England, highlighting several counties in yellow. The counties shown are Bedfordshire, Hertfordshire, Essex, Thames Valley, Hampshire, and Kent. Major cities and towns are marked with red location pins and labeled: Bedford, Luton, Oxford, Reading, Hammersmith, Finsbury Park, Newham, London, Chelmsford, Canterbury, Southampton, and Portsmouth. The map also shows the coastline and the English Channel.



advance



Probation
Service



Advance Registered Charity No. 1086873 | A Company Limited by Guarantee Registered offices in England: Advance Advocacy and Non-violence Community Education, c/o, Knox Cropper LLP, 65-68, Leadenhall Street, London, EC3A 2AD | Reg. No. 040646600

Our specialist Advocates work closely with probation, housing, health, children's services, and other professionals to get women the help and advice they need, when they need it, from one place.



advance

www.advancecharity.org.uk

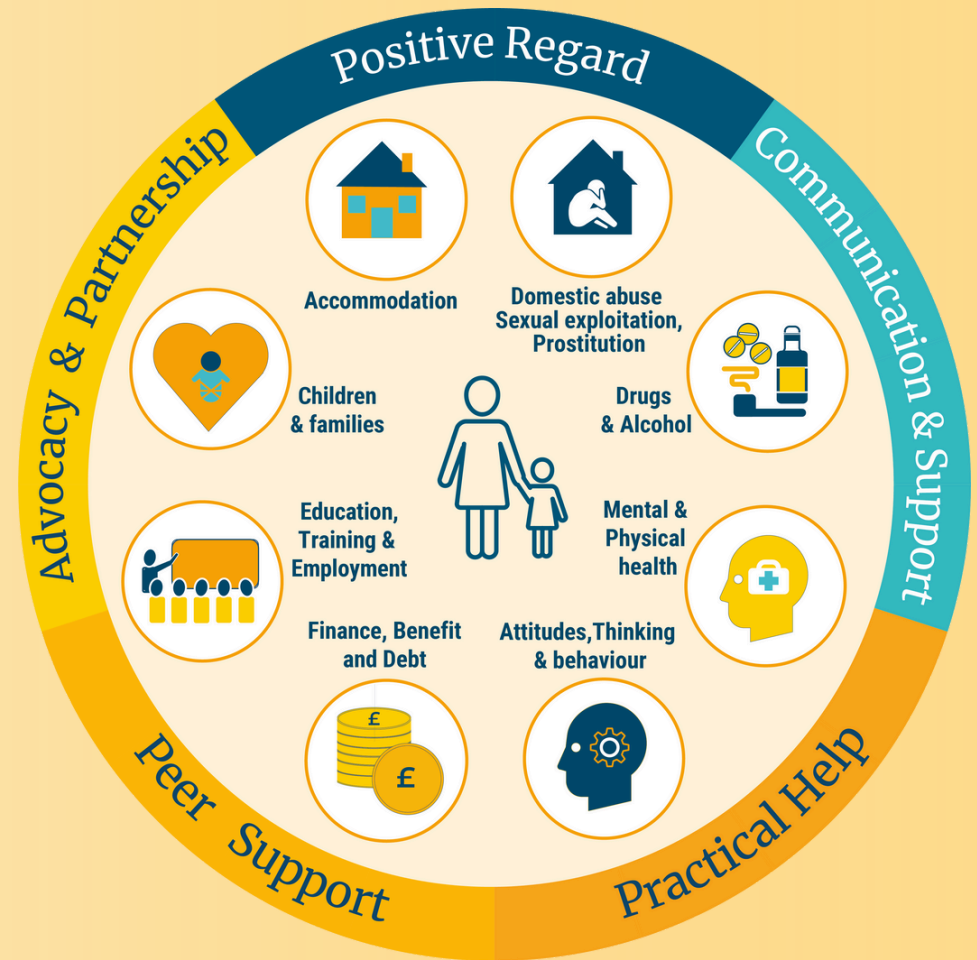
Advance's Minerva Service offers:

- Targeted support and advocacy for women to address practical and emotional needs, including outreach services.
- Intensive one-to-one support across all women's rehabilitative needs.
- Safe, women-only local hubs pan-regional and Women's centres.
- Access to tailored groups and workshops delivered by specialist providers e.g. finance and benefits, emotional wellbeing.
- Prison in-reach and Through-the-Gate Support for women in custody within three months prior to their release.

Referrals can be made by Probation Practitioners via **Refer & Monitor only.**

Enquiries from all other professionals can be sent to:

Kent: minerva_kent@advancecharity.org.uk
Essex/Hertfordshire: minerva_essexherts@advancecharity.org.uk
Thames Valley: minerva_thamesvalley@advancecharity.org.uk
Bedfordshire: minerva_bedfordshire@advancecharity.org.uk
Hertfordshire: minerva_hampshire@advancecharity.org.uk



1000s
of women
supported

We provide holistic
support around
each woman's
personal needs

94%
of women reported
improved health
and well-being