

Maia and LIFT Partnership Service in London



Advance Maia Centres at Hammersmith & Fulham, Islington and Newham

Advance is a national charity for women, supporting women and children experiencing domestic abuse, including those in contact with the criminal justice system.

Advance works in partnership with professionals and organisations to provide women with practical and emotional

support so that they can be safe and lead equal lives, and to raise awareness to deliver the systems change required to improve the response to women and children's needs. Find out more about Advance's work, its unique partnership approach, and its women's centres: Advancecharity.org.uk



VRU

MAYOR OF LONDON
VIOLENCE REDUCTION UNIT

Advance Registered Charity No. 1086873 | A Company Limited by Guarantee
Registered offices in England: Advance Charity, PO Box 74643, London, W6 6JU | Reg. No. 04064660

At Maia we walk alongside you to create a safe place to grow



To speak to a member of the Maia team:

Tel: 0800 059 0117

Email: maia@advancecharity.org.uk

www.advancecharity.org.uk



Advance's Maia supports self-identifying young women and girls aged 13-25 who are at risk of, or who have previously experienced domestic abuse, and those at risk of contact with the criminal justice system.

This abuse could involve familial relationships at home and in their intimate relationships. Maia is designed to ensure that young women and girls get vital support at the earliest opportunity and prevent further harm.

We know this can include:

- risk of exclusion from education and employment
- further abuse and exploitation
- further contact with the criminal justice system including prison.



Advance's Maia Service offers:

- Specialist early intervention and prevention support to self-identifying girls and young women in our safe, young women and girls' only spaces, empowering them to make a positive change in their lives.
- Young women and girls-centered one-to-one advocacy, and strengths-based support, through our Maia mentor advocates.
- Access to tailored group sessions empowering young women and girls to support each other and move forward with their lives.
- Support from Peer Mentors with lived experience creating a safe space to reflect on experiences.
- Specialist group sessions focused on employment support for young women and girls 18+.
- Specialist group counselling for young women and girls aged 16+.
- Use of empowerment models to collaboratively create a safe space to allow her to tell her story in the way that she would like and at her pace.

Referrals info

To request a case consultation, see links to consultation form on our website. Scan QR code.

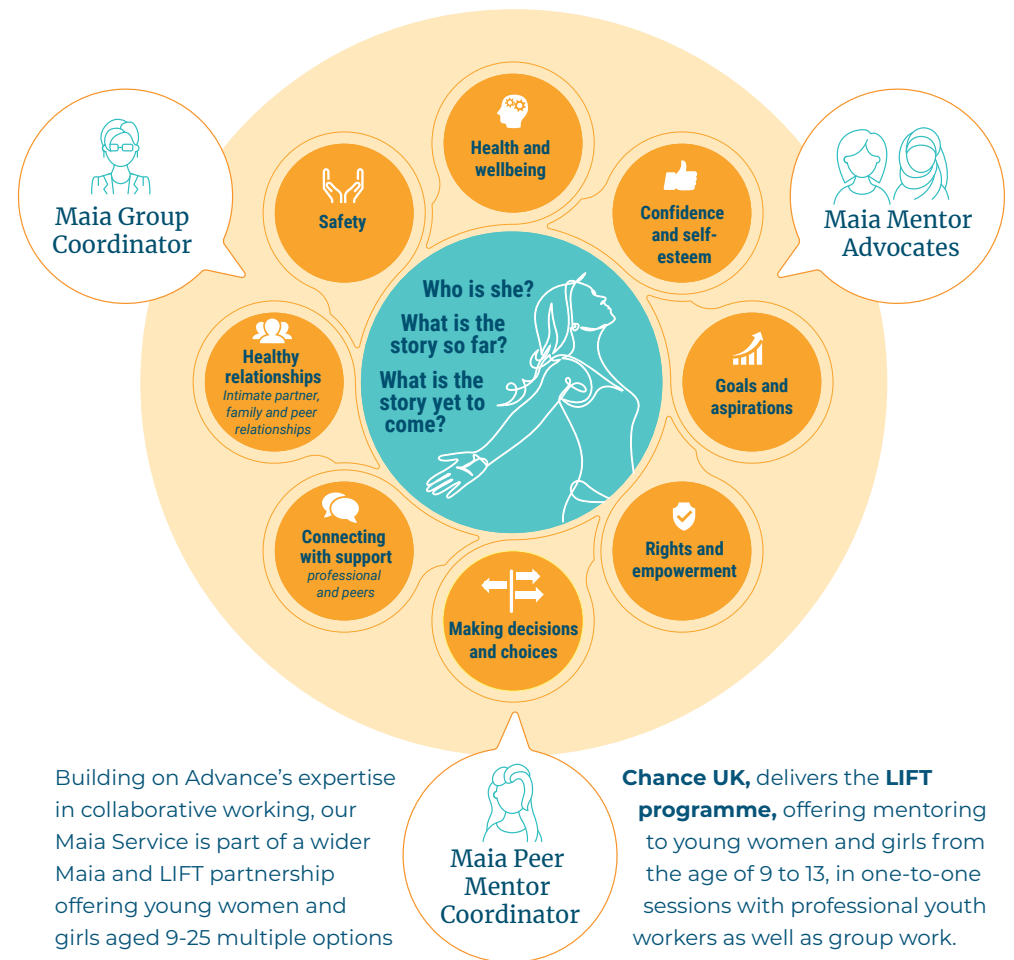


To speak to a member of the Maia team:

Tel: 0800 059 0117

Email: maia@advancecharity.org.uk

Maia and LIFT Partnership



Building on Advance's expertise in collaborative working, our Maia Service is part of a wider Maia and LIFT partnership offering young women and girls aged 9-25 multiple options of support.

Advance leads the Maia service in partnership with **Working Chance** and **Woman's Trust** which works with young women and girls aged 13-25.

Chance UK, delivers the **LIFT programme**, offering mentoring to young women and girls from the age of 9 to 13, in one-to-one sessions with professional youth workers as well as group work. For more information and to refer, visit www.chanceuk.com/



We focus on building young women's trust, self-identity, self-confidence, skills and ability to recognise when and where to get support.